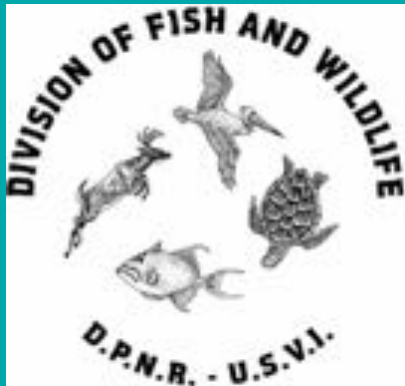
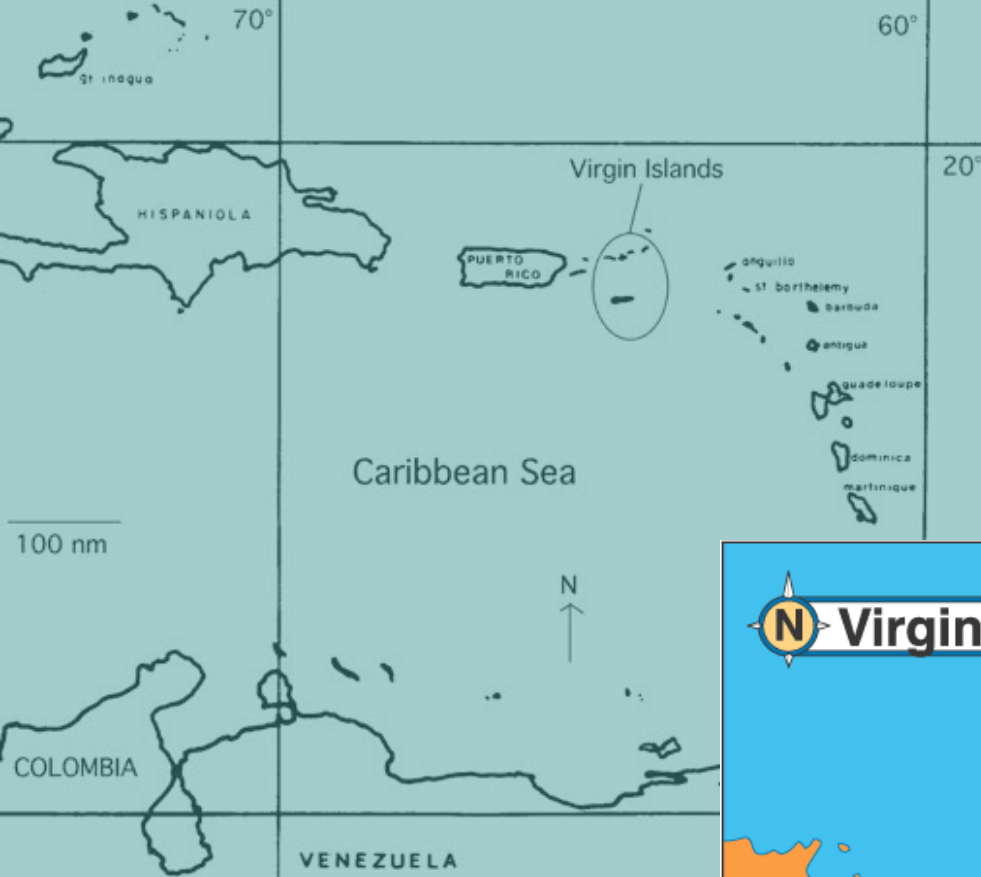


Fisheries in the US Virgin Islands



Jed Brown
Acting Director & Chief of Fisheries
USVI Division of Fish and Wildlife
St. Croix, US Virgin Islands



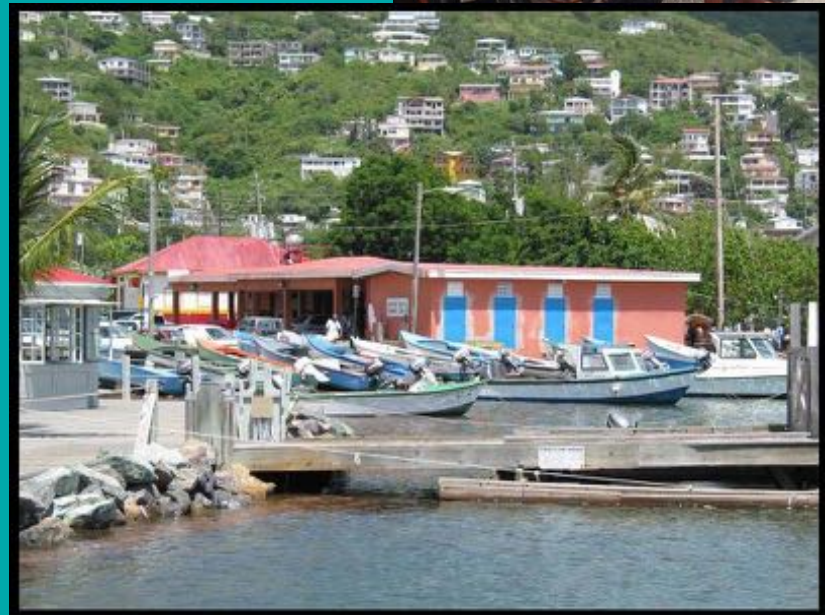
US Virgin Islands

Territorial waters
Shoreline-3 miles
Managed by USVI

Federal EEZ
3-200 miles
Managed by Caribbean Fishery Management Council

Fisheries Description

- 181 Registered Fishers STX
- 114 Registered Fishers STT
- Small boat fishery (16' -25')
- Traps for fish and lobster
(more on STT)
- Hook & Line
- Net
- Spearfishing using
SCUBA
(more on STX)



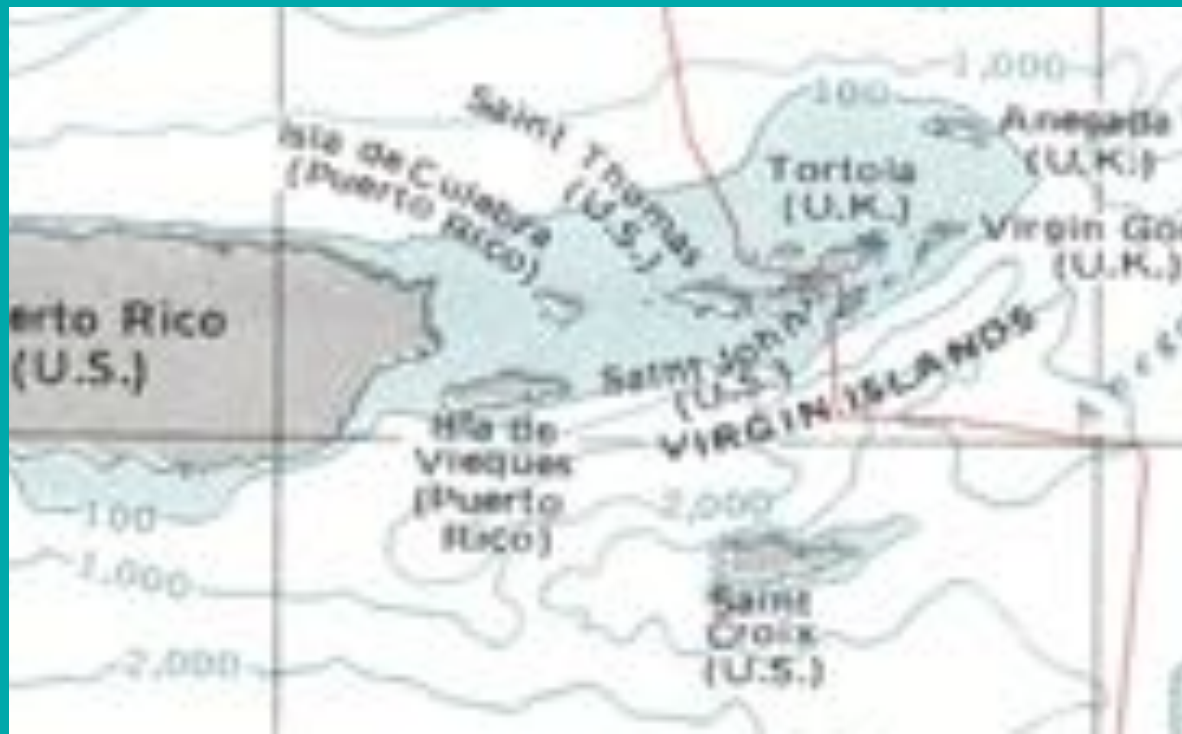
LANDINGS COMPARISON 2008-2009

ST. CROIX

- PLATFORM SIZE– 120 NM²
(0-100 FM; 18%=21NM² IN EEZ)
- LANDINGS – 1,080,521 LBS

ST. THOMAS/ST.JOHN

- PLATFORM SIZE – 510 NM²
(0-100 FM; 43%=218NM IN EEZ)
- LANDINGS – 703,065 LBS



Division of Fish and Wildlife



- Bureau of Fisheries
- Bureau of Wildlife
- Bureau of Environmental Education

Role of the Bureau of Fisheries

- Monitoring and assessing fish resources in the USVI
- Scientific advisor to the Commissioner of the DPNR on the condition of USVI marine and fisheries resources
- Support the St. Thomas/St. John and St. Croix Fisheries Advisory Committees
- Participate in Caribbean Fishery Management Council activities

USVI Division of Fish and Wildlife

- 100 % federally-funded from grants from NOAA Fisheries and USFWS
- Receive no local funding
- No recreational fishing & hunting license funds
- Total Budget~\$3.6 million

Staffing

- 13 Staff
- 6 Fisheries staff
- Guam
- With ESA funding had up to 55 staff

Funding



- U.S. Fish & Wildlife Service
- Wildlife & Sport Fish Restoration Program
- Dingell-Johnson/Wallop-Breaux/Pittman-Robertson
- "user pays - user benefits". Anglers and boaters pay fishing tackle excise taxes and motorboat fuel taxes
- Similar program for hunters funds wildlife programs
- Funds allocated to state fish and wildlife agencies for sport fishery restoration, habitat conservation projects, and boating access and facilities projects.
- 80-85% of our budget
- These funds **can not** be used for commercial fishing projects

HABITAT ENHANCEMENT FISH AGGREGATING DEVICE (FAD)

- 
- A fisherman in a white shirt and red pants stands on a large, yellow, spherical buoy that serves as a Fish Aggregating Device (FAD). The buoy is partially submerged in the blue ocean. In the background, another boat with two people is visible on the horizon under a blue sky with scattered white clouds.
- Deployment and subsurface and surface maintenance of FADs.
 - Reduce fishing pressure on depleted resources by redirecting effort to abundant pelagic fishery inshore fisheries seasonally resources.
 - Concentrate pelagic resources for harvest by recreational fishers.

NOAA and CFMC funding

- Currently ~20% of annual budget
- Typically about 15% of annual budget
- ~\$700,000/ year
- Funds fishery dependent and independent data collection programs and CFMC activities

Caribbean Fishery Management Council Liaison Grant

- Fisheries Advisory Committees
- Caribbean Fishery Management Council Meetings

NOAA Funding

Fishery Independent Sampling Program

SEAMAP – C

Recent SEAMAP-C Projects

- Reef fish surveys
- Yellow tail surveys
- Conch Survey
- Lobster Survey
- Whelk Surveys
- Parrotfish reproduction survey

NOAA Funding

Fisheries Dependent Data

- **State/Federal Cooperative Statistics Program**
 - 1983 - All Gear Types/ Complete Catch
- **Inter-Jurisdictional Fisheries Program**
 - 1995 - All Gear Types/ Complete Catch
- **MARFIN**
 - 2008 - Trap and Line Only/Subsample of Catch



Fishery Dependent Data Collection

- Fishers sell their own fish
- No dealer reporting as in the US mainland
- Fishers report own catch on commercial catch report forms (CCR)
- Fisher's catches are port sampled at least 4 times per year by DFW port samplers
- Fish are identified, lengths and weights are taken



Fishery Dependent Data Collection

- All licensed commercial fishers are required to submit monthly catch reports to DFW by 15 days following the end of the month
- STT CCR copies transmitted to DFW-STX
- QA/QC of CCR submittals
- CCR catch data is entered into a database program and sent to NOAA Southeast Science Fisheries Center for analysis
- Port sampling biostatistical data entered into NOAA Trip Interview Program (TIP) database

CCR submittal non-compliance

- STT—23%
- STX—26%

Commercial Catch Report (CCR)

CATCH REPORT FORMS

*For Commercial Fishers of the U.S. Virgin Islands
July 2008 to June 2009*

PLEASE USE THESE CODES ON YOUR MONTHLY CATCH REPORTS

DATE FISHED – Write trip information next to fishing day.

GEAR- Report your main fishing gear under gear type 1, and any other gear used under gear type 2

Code	Type	Gear Number	Code	Type	Gear Number
T	Traps	Total number of traps hauled	O	Longline	Length of long line (in miles)
G	Gillnet*	Total number of nets used	SN	SCUBA-Net	Total number of nets**
C	Castnet	Total number of nets used	SL	SCUBA-Lobster	Total number of divers* *
N	Seine Net	Total number of nets used	SC	SCUBA-Conch	Total number of divers**
R	Trammel Net*	Total number of nets used	SF	SCUBA-Fish/Spear	Total number of divers**
L	Line Fishing	Total number of lines fished			
		*Gear type NOT using SCUBA			**Do not report number of tanks

Commercial Catch Report (CCR)

COMMERCIAL CATCH REPORT FORM JULY 2008

Name: _____ ID#: _____ Boat Reg. No.: VI- _____ Total Pots Fished: Fish pots: _____ Lobster pots: _____ No. of Helpers: _____

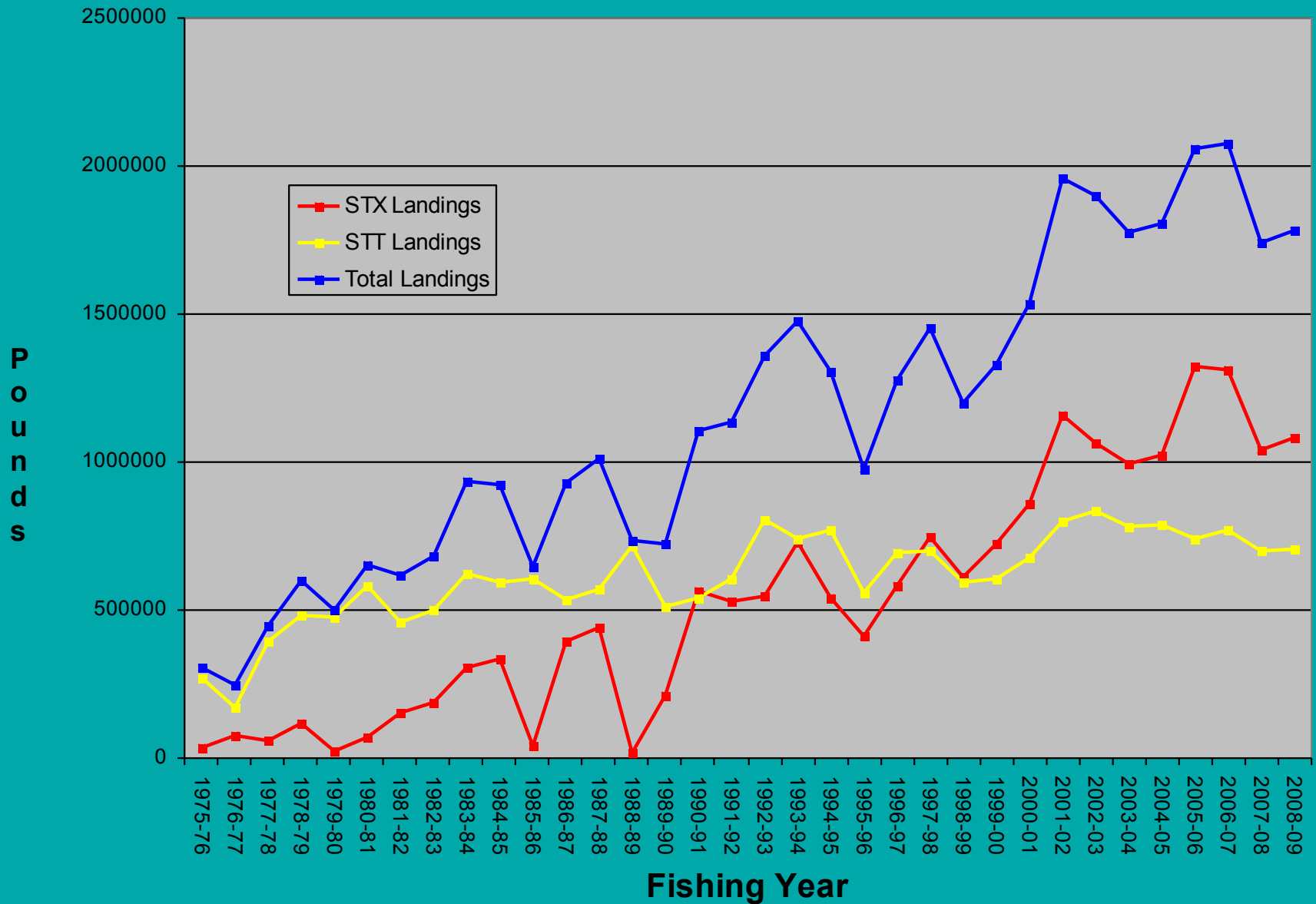
date fished	gear type 1	gear no. 1	gear type 2	gear no. 2	area fished	distance from land (miles)	hours fished	trap soak time (days)	total lobster lbs	total conch lbs	total whelk lbs	total finfish lbs	grouper lbs	snapper lbs	grunt lbs	jack lbs	surgeon lbs	parrot lbs	shellfish lbs	trigger lbs	porgy lbs	barra lbs	goat lbs	baitfish lbs	pelagic D/T/W/M	FAD #	released F or L D or A lbs.	other species lbs.
1/T																												
2/W																												
3/R																												
4/F																												
5/S																												
6/S																												
7/M																												
8/T																												
9/W																												
10/R																												
11/F																												
12/S																												
13/S																												
14/M																												
15/T																												
16/W																												
17/R																												
18/F																												
19/S																												
20/S																												
21/M																												
22/T																												
23/W																												
24/R																												
25/F																												
26/S																												
27/S																												
28/M																												
29/T																												
30/W																												
31/R																												

Initial & date when report received: _____ I attest that the information recorded on this form is true and accurate (sign & date) _____

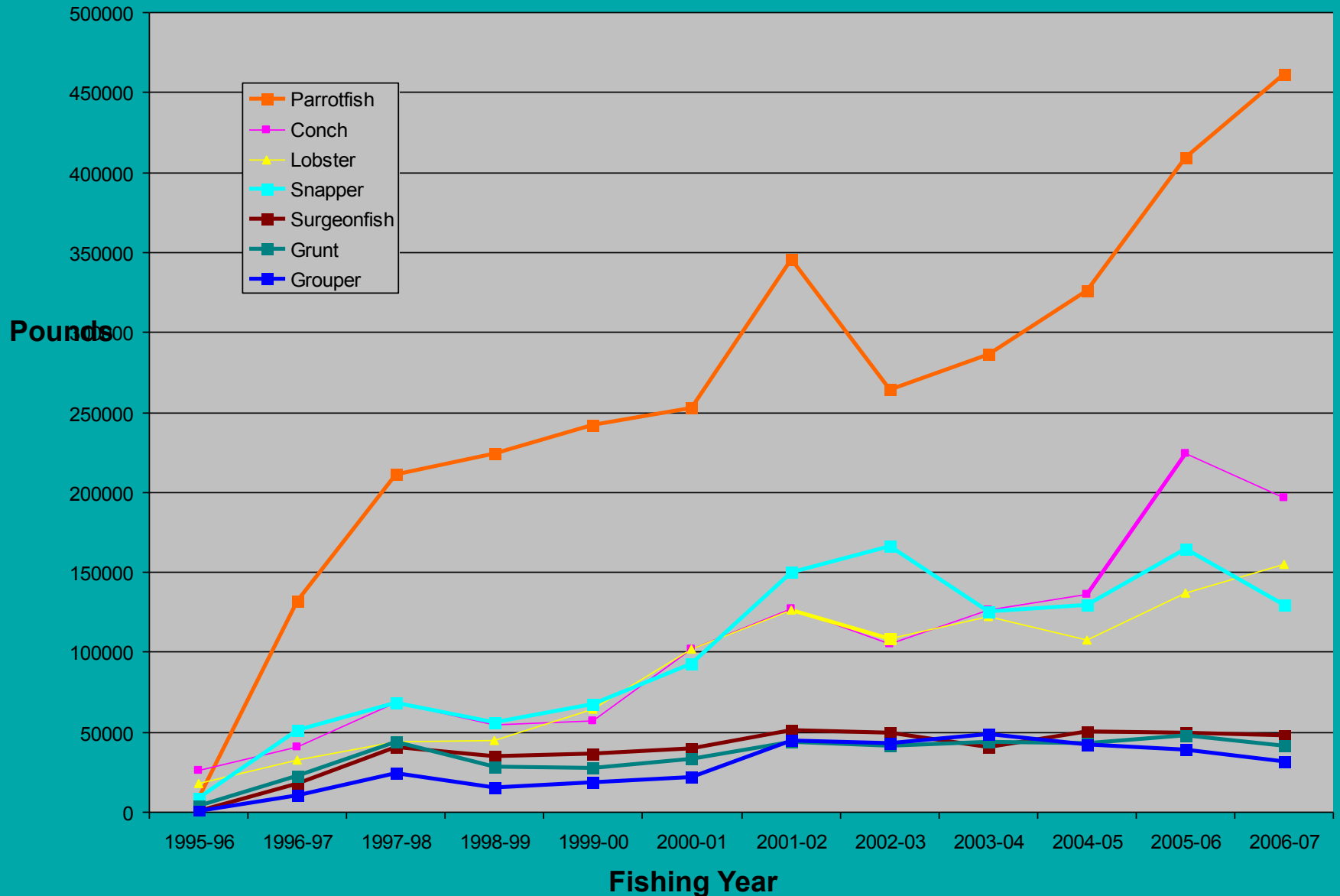
JULY 2008

RECEIVED AT DFW:

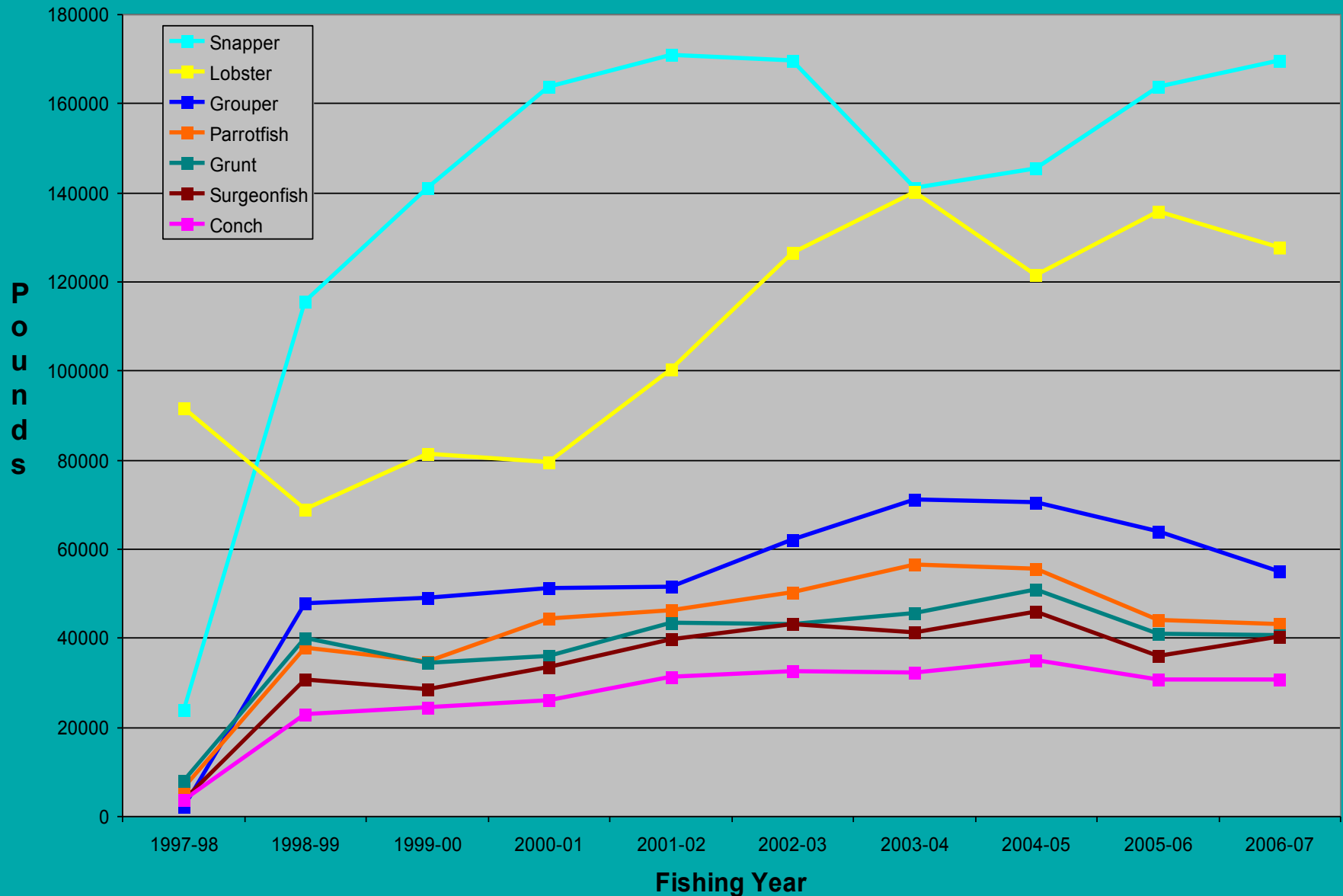
VI Landing Data



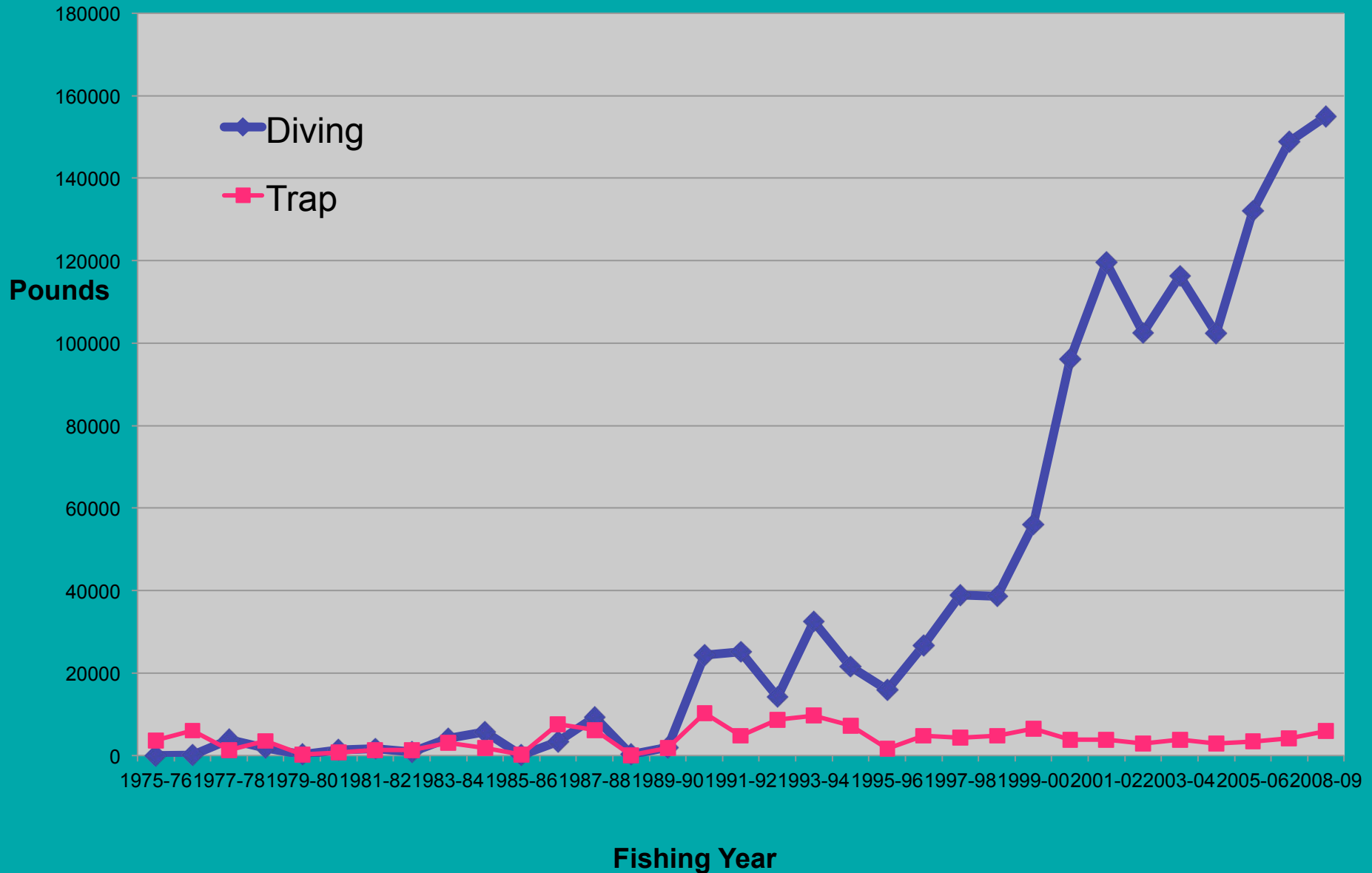
St. Croix Popular Species Landings by Fishing Year



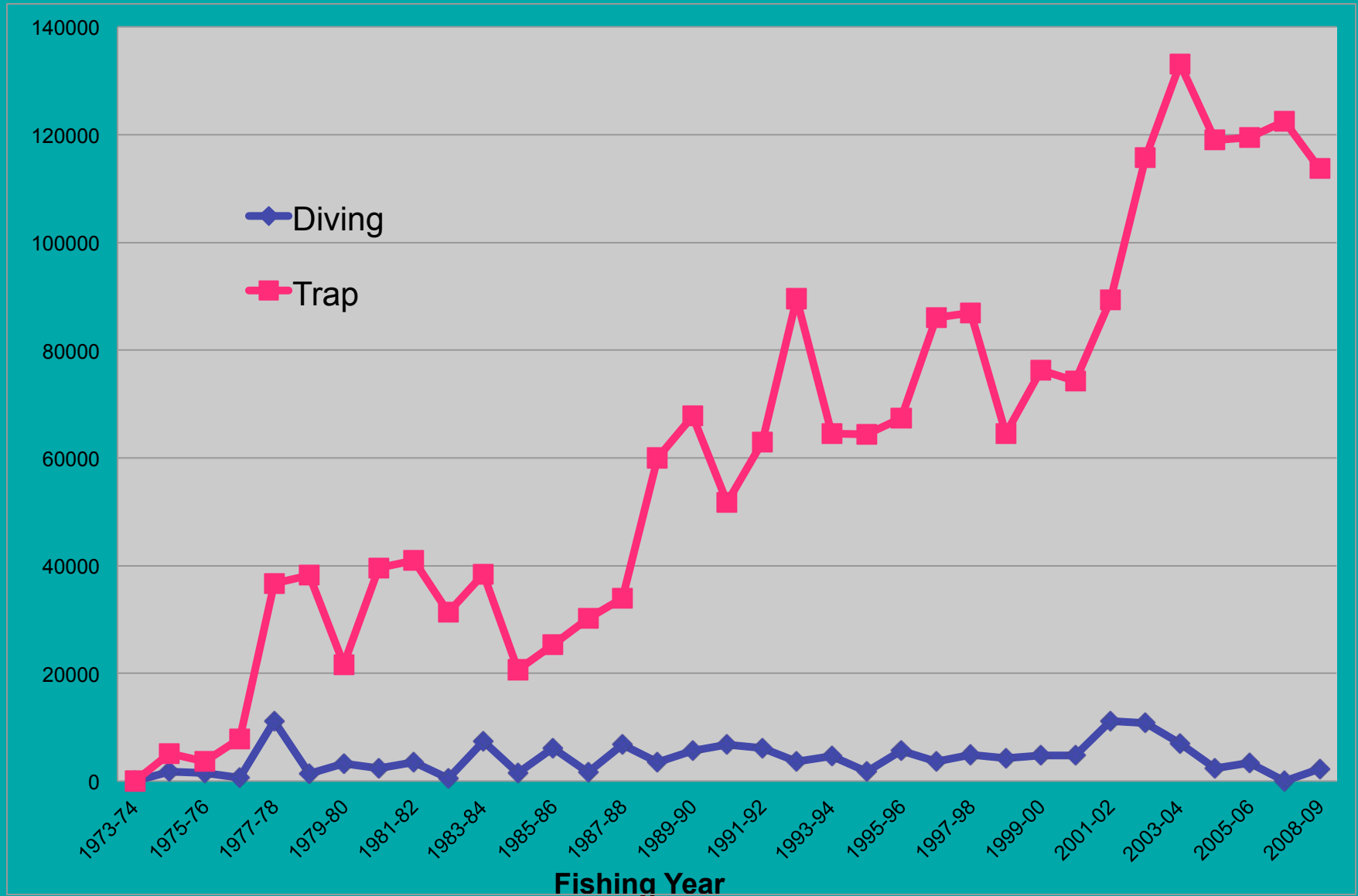
St. Thomas Popular Species Landings by Fishing Year



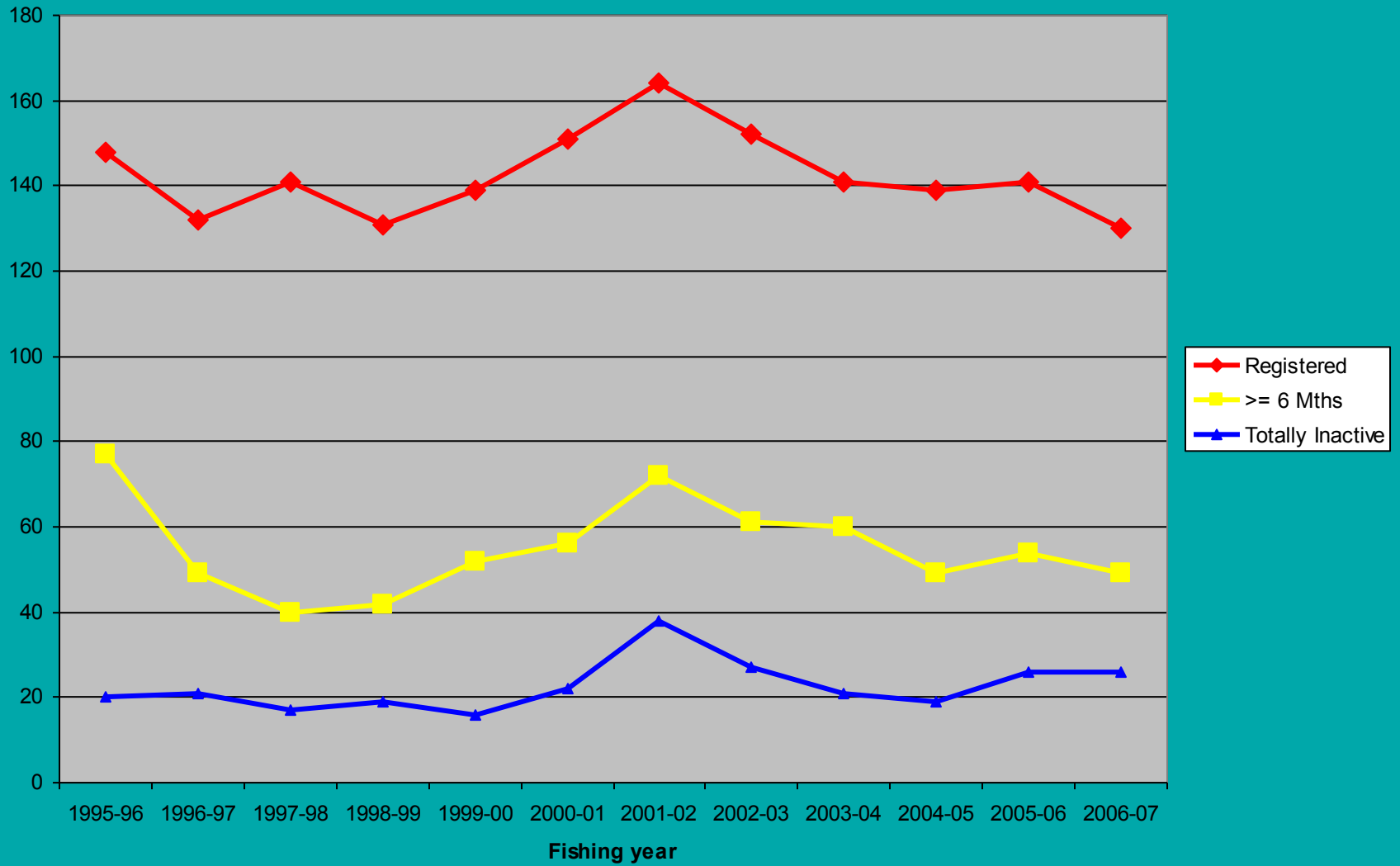
St. Croix Lobster Landings



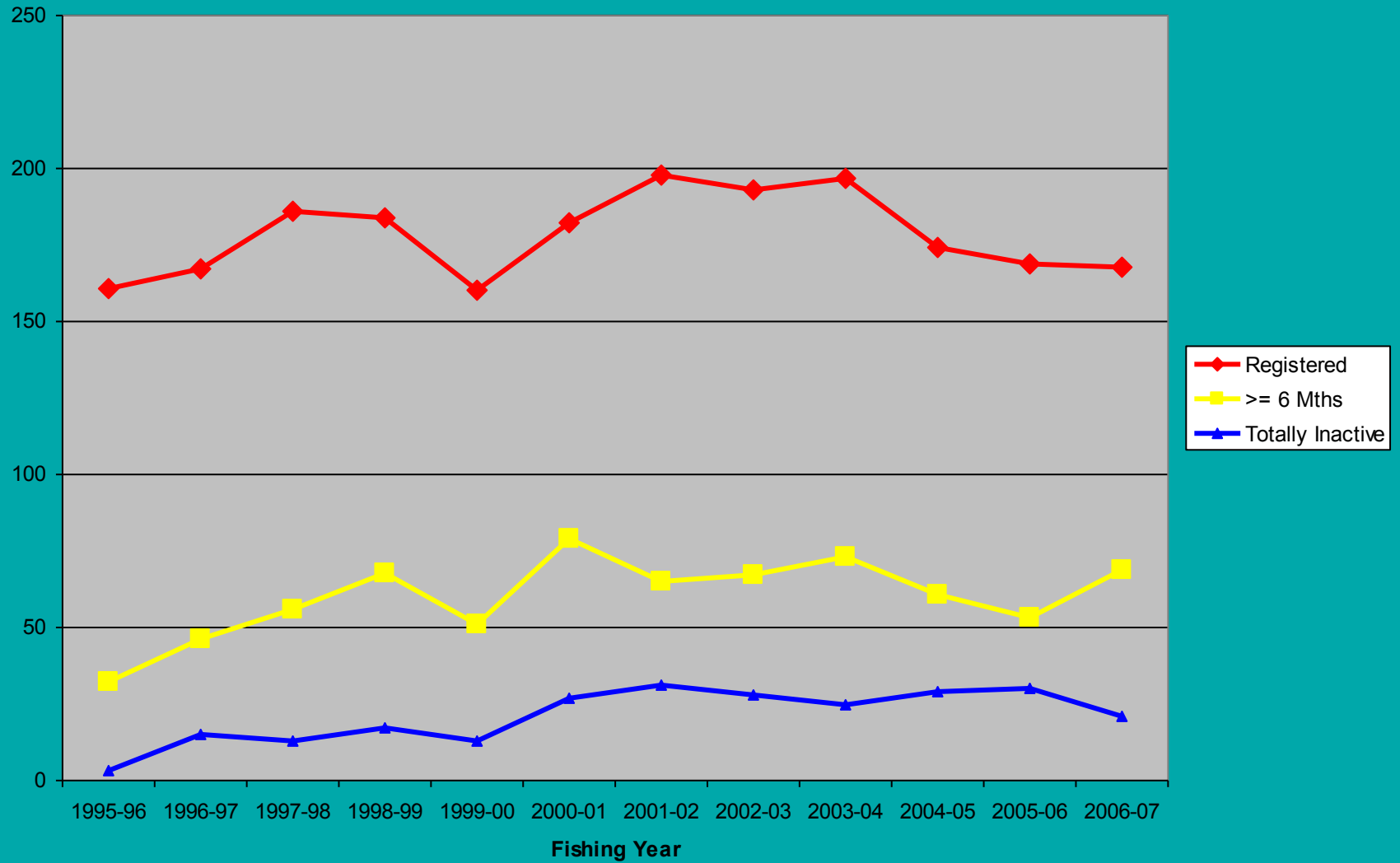
St. Thomas/St. John Lobster Landings



St. Thomas Inactivity



St. Croix Inactivity

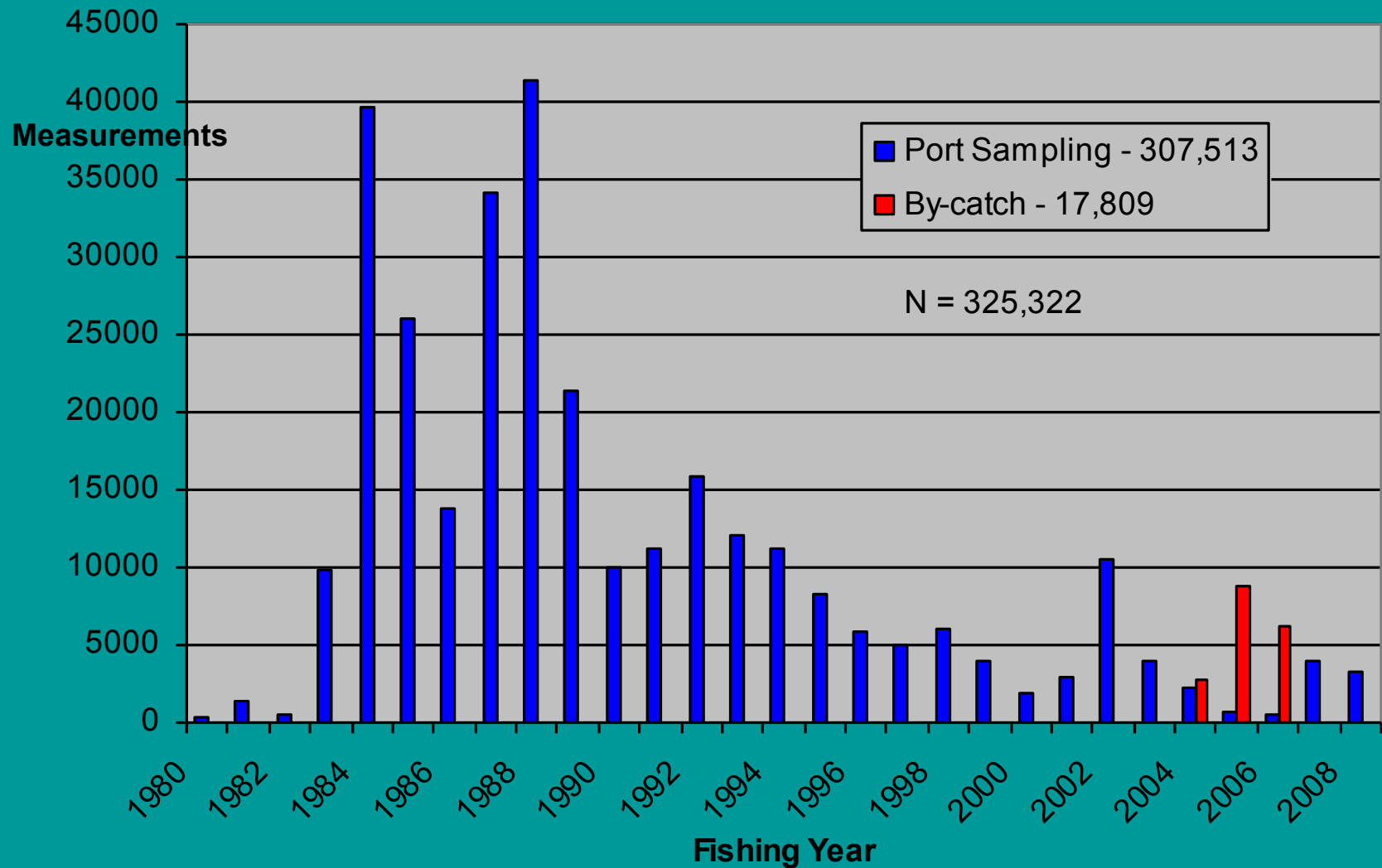


Territorial Fisheries Data Needs

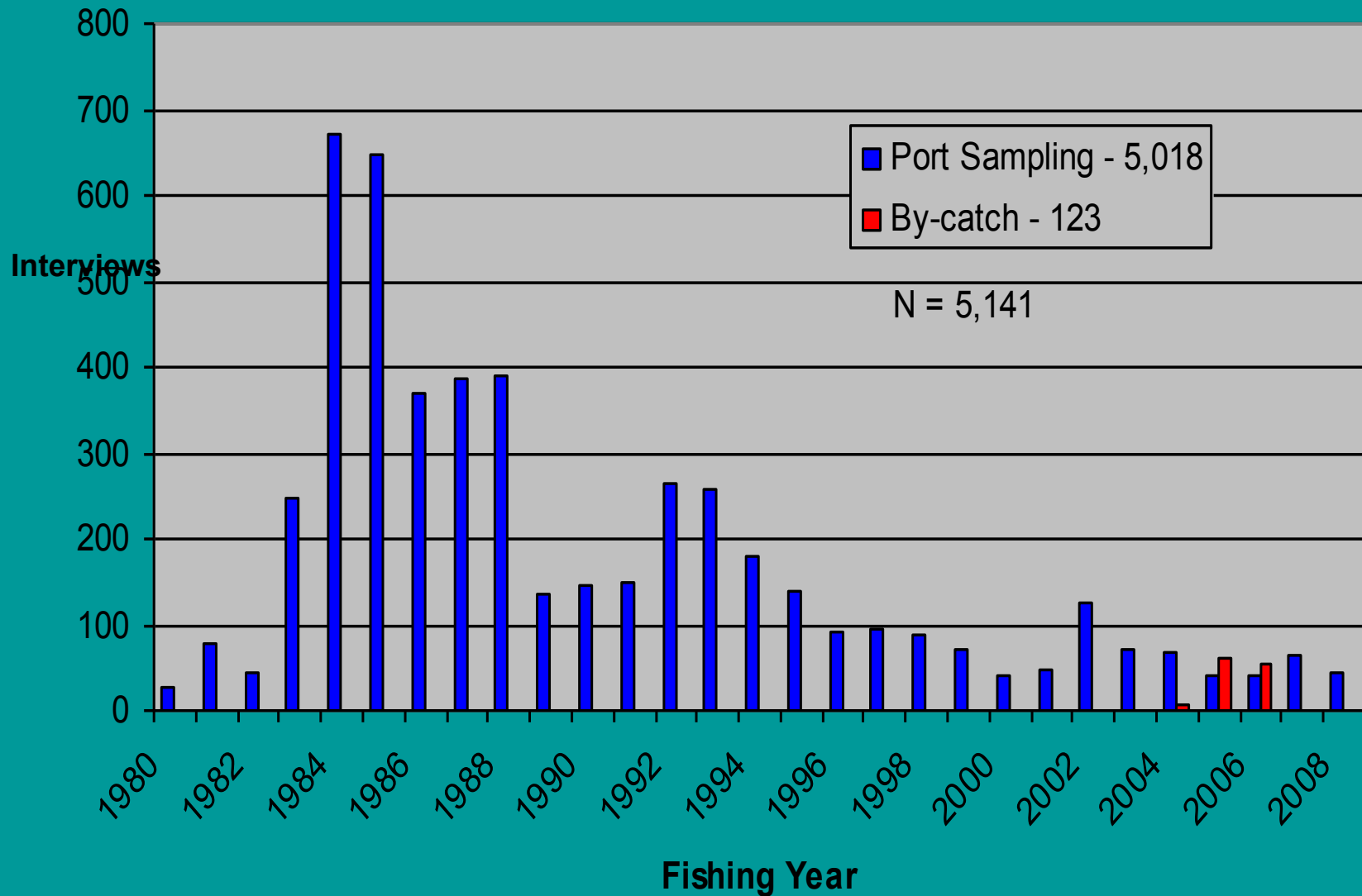
- Accurate data that reflects fishery and industry
- Real-time data collection
- Real-time data processing
- Data verification
- Satisfy grant objectives vs. fishery needs
- Lack of funding
- Inability to hire personnel
- Inability to attract key personnel
- Lack of enforcement of fisheries regulations
- Lack of data on the effectiveness of existing regulations

Thank you

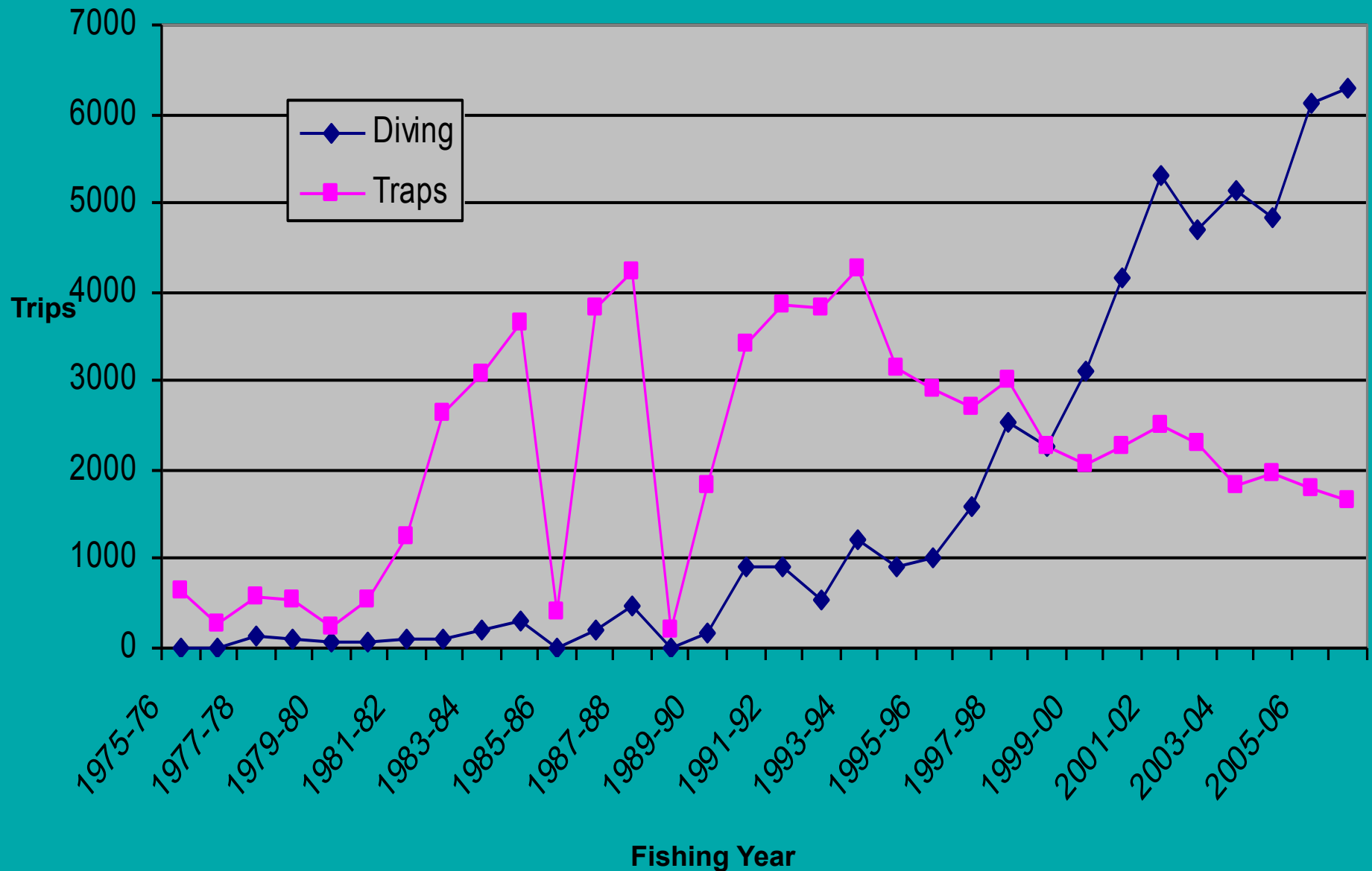
VI TIP Biostatistical Samples



VI TIP Biostatistical Samples



St. Croix Lobster Trips



St. Thomas/St. John Lobster Trips

