



NOAA
FISHERIES

SAFMC/SERO-HCD/Navy Partnership Example

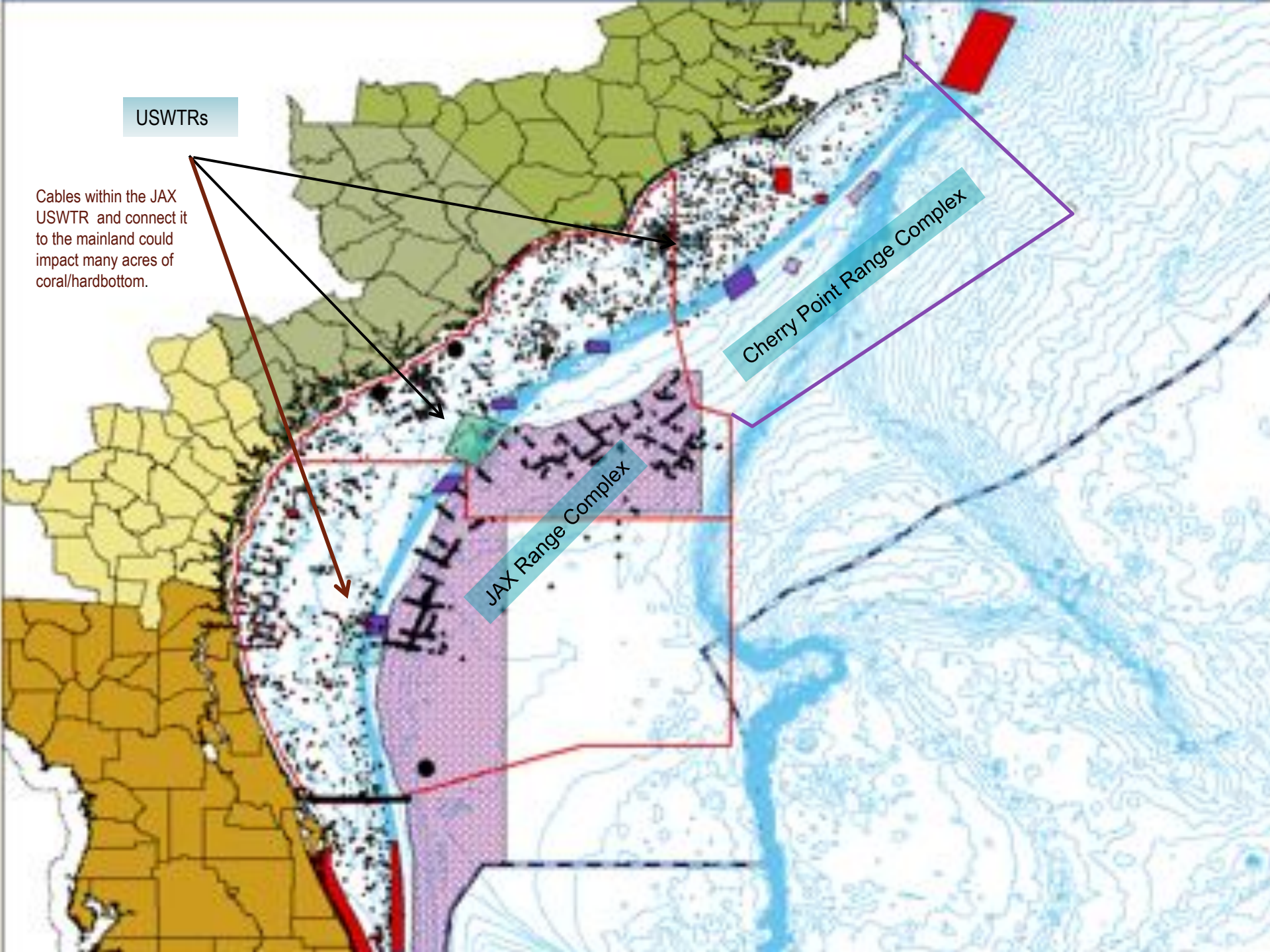
Roger Pugliese
South Atlantic Fishery Management Council

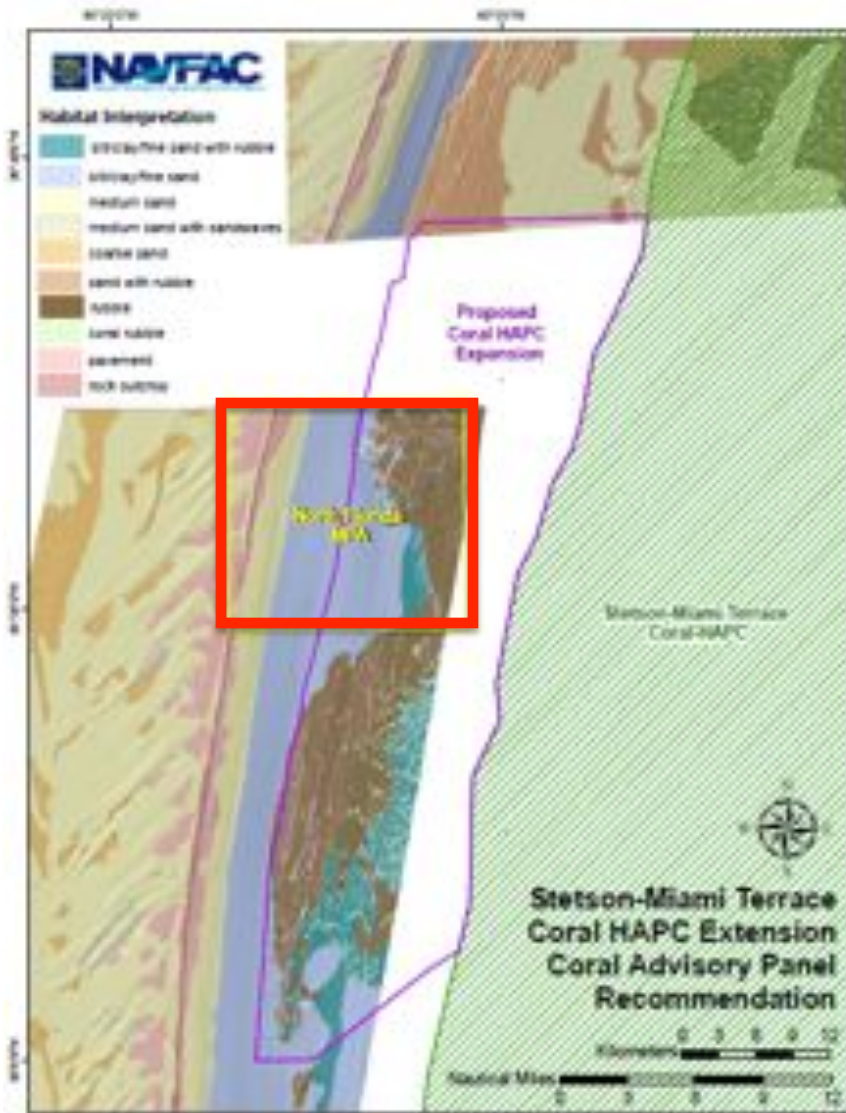
Pace Wilber
Habitat Conservation Division
NMFS Southeast Regional Office



USWTRs

Cables within the JAX USWTR and connect it to the mainland could impact many acres of coral/hardbottom.





SAFMC/SERO-HCD/Navy Partnership

- **Partners: SAFMC, SERO, and Navy**
- **Mechanism: Semi-formal**
- **Duration: 5+ years**
- **Origins: EFH Consultation for Jax Range Area**
- **Outcome: Expansion of Miami-Stetson Coral HAPC**
- **Lessons Learned:**