

EFH roundtable discussion

New England

Michelle Bachman, NEMFC Staff

National EFH Summit

Annapolis, MD · May 17-19, 2016

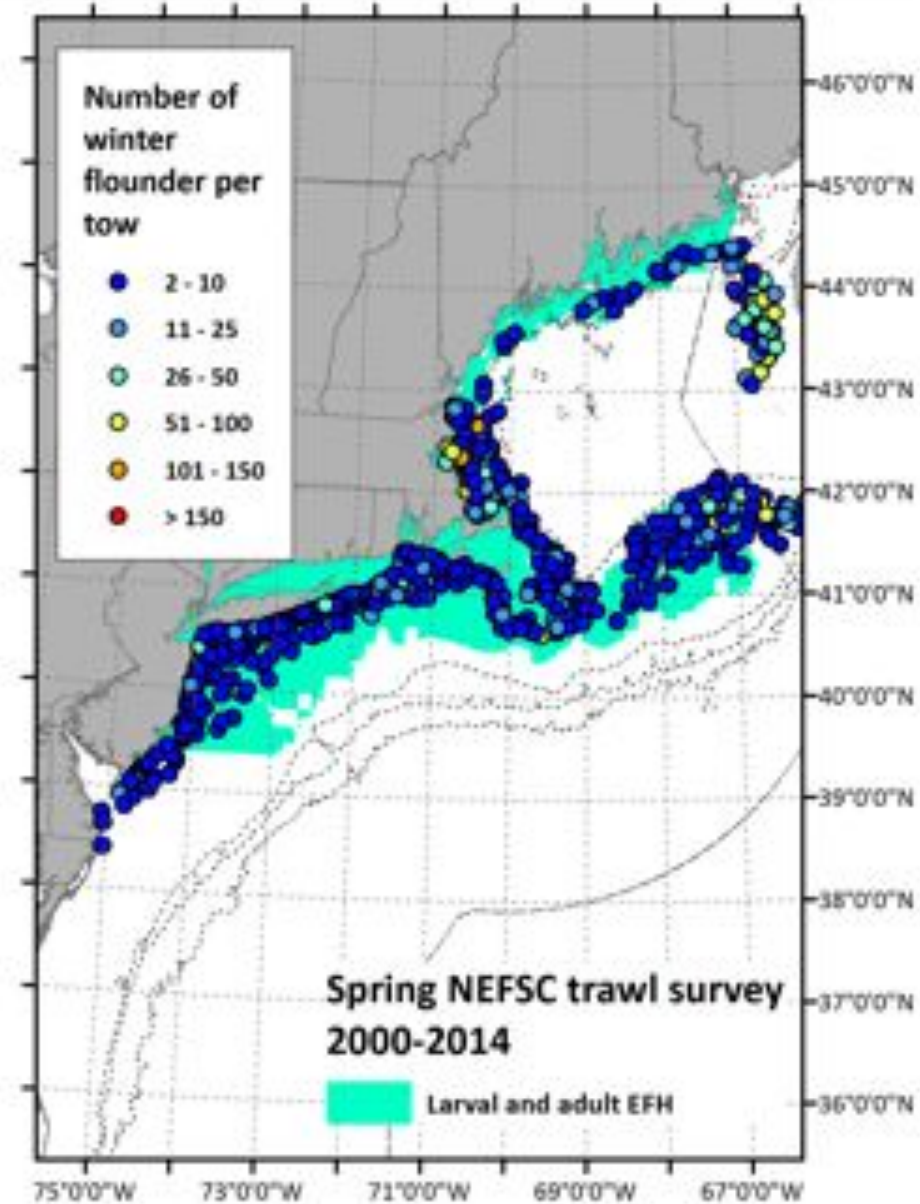
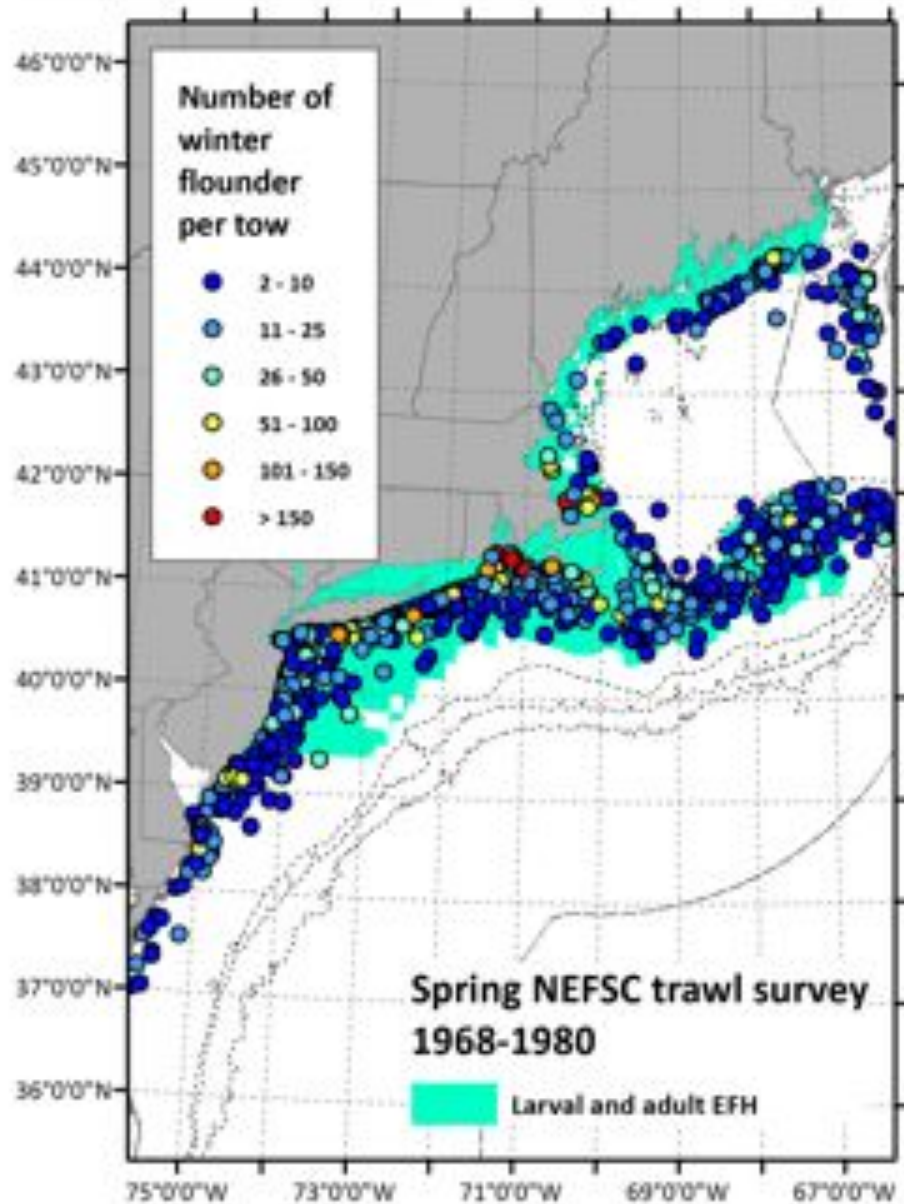
Designation approach

- *28 species, mostly benthic*
- *Separate designations by life stage*
- *Based on trawl survey data (state and federal)*
- *Analysis of federal survey data considers depth, temperature, relative abundance*

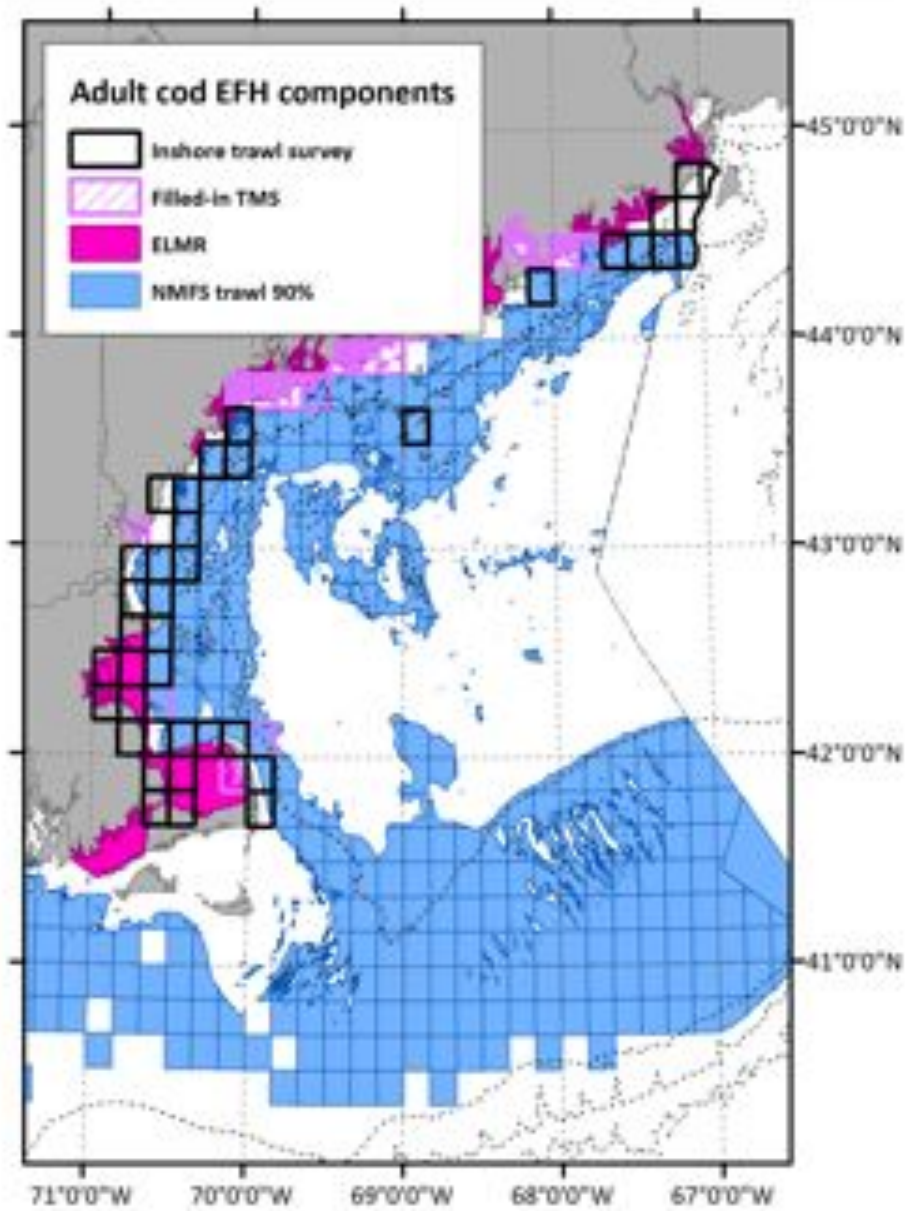
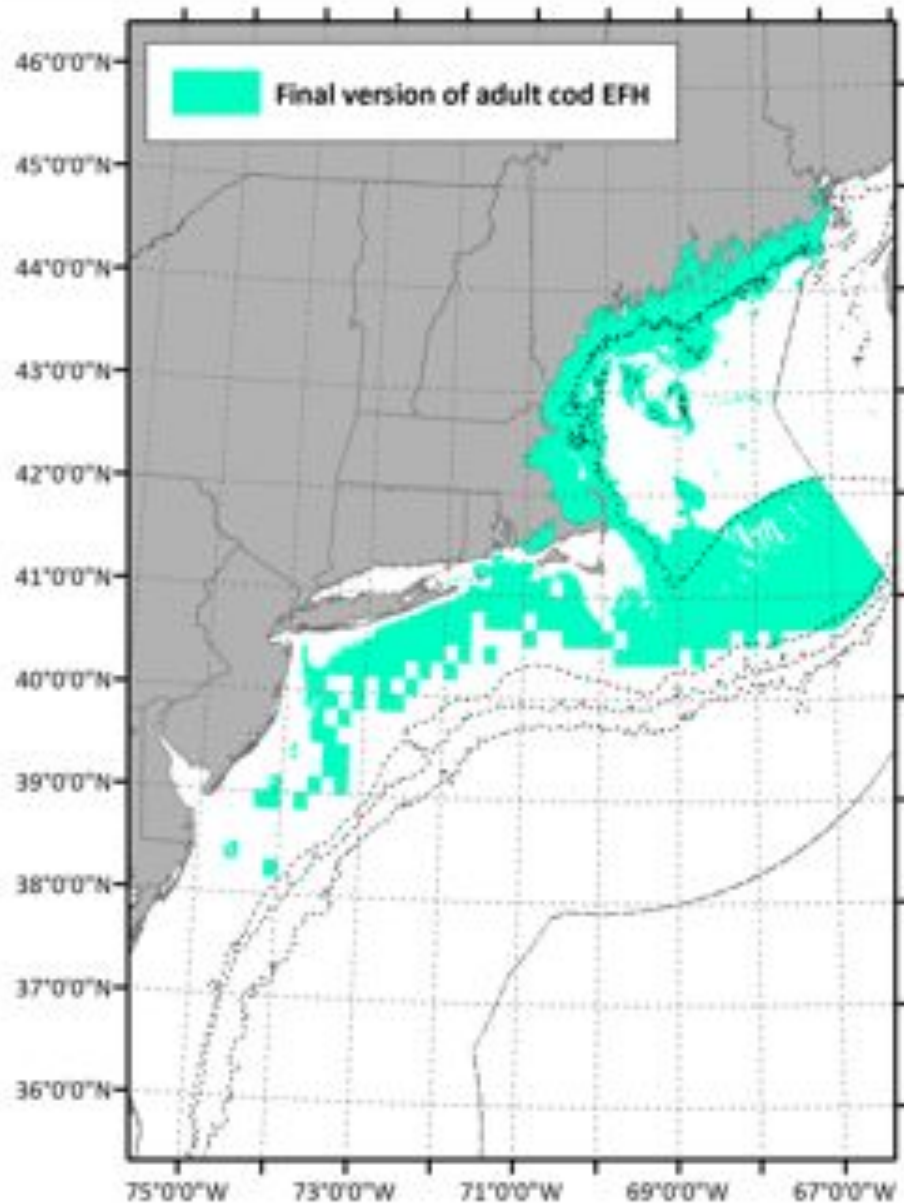
Challenges and questions

- Relatively data-rich, but...
 - While we used a long time series of information, we have not been forward looking
 - Have struggled to integrate disparate sets of information in a meaningful way
- Are we striking the right balance:
 - Are mapping methods too complex?
 - Need to better consider what designations are being used for, who they are being used by, and craft designations that meet these needs

Should designations reflect the past, or look ahead to the future?



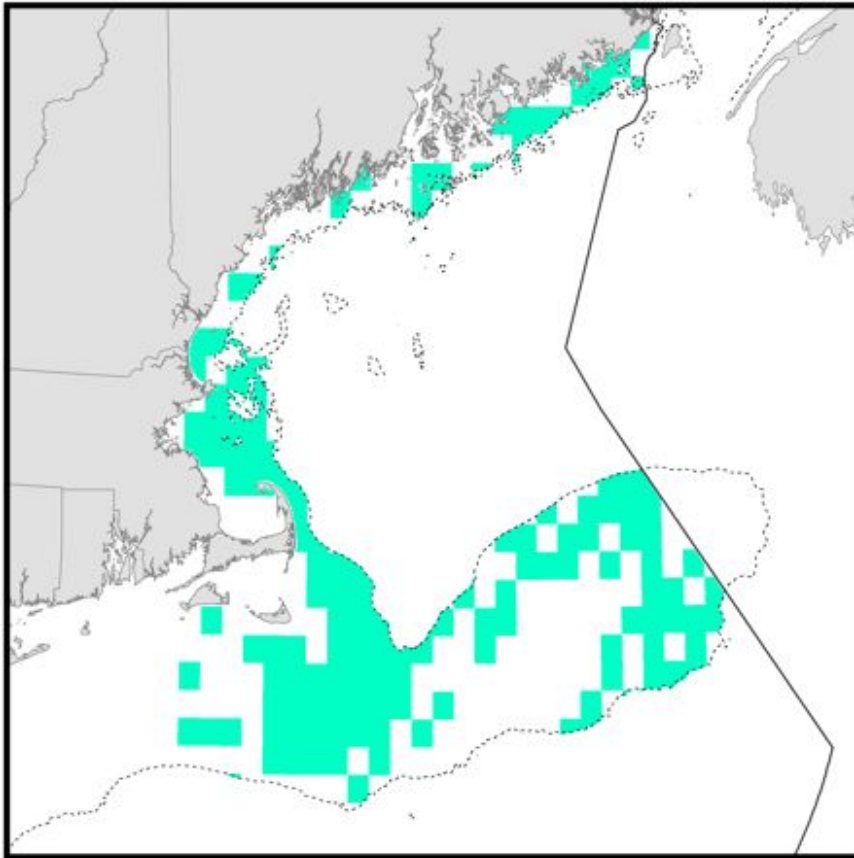
How can we better integrate different sources of information?



Can we make mapping methods more streamlined and intuitive?

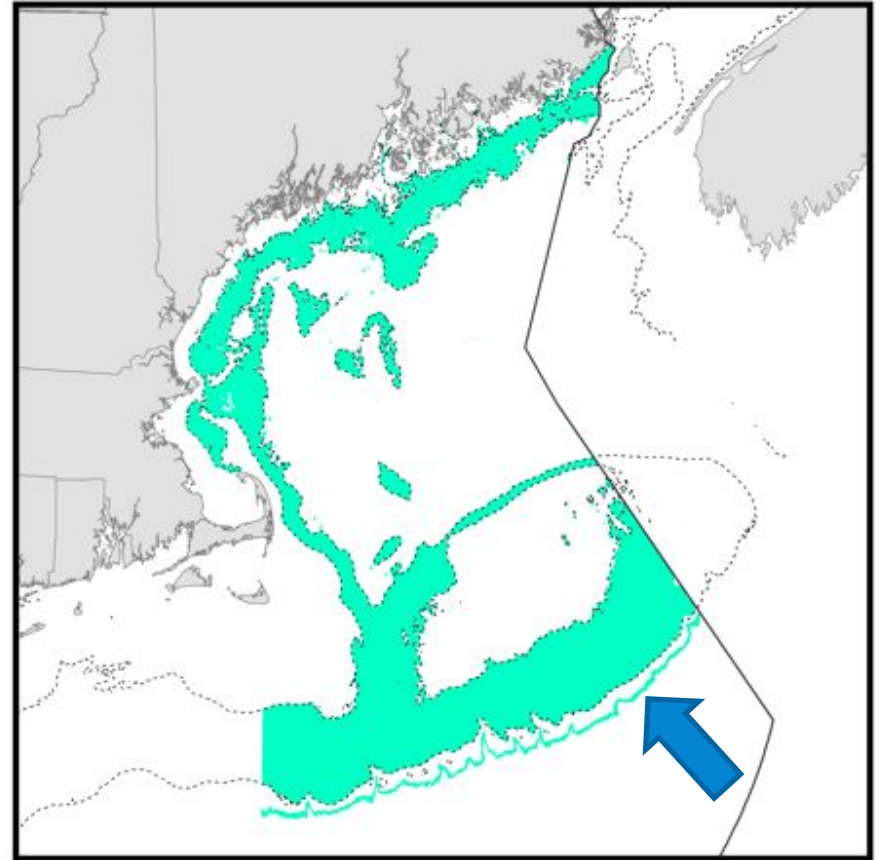
Atlantic herring eggs

EFH distribution is very patchy, based on distribution of very small larvae



Atlantic halibut (all lifestages)

Discontinuous designation off the southern margin of Georges Bank on the continental slope



Can we develop more effective designations by considering end users and more clearly specifying objectives?

- Is the primary use of the designations EFH consultations and non-fishing impacts?
 - If so, should focus more on inshore areas and data – e.g. examine relative abundance in state surveys
- Do our designations effectively support the design and evaluation of fishery management measures?
- Should we develop maps that are more narrowly focused, or broader?
- Can we make more effective use of the HAPC authority to draw attention to the most productive habitats and fishing grounds?