

MRIP For-Hire Electronic Reporting Pilot Study in the Gulf of Mexico



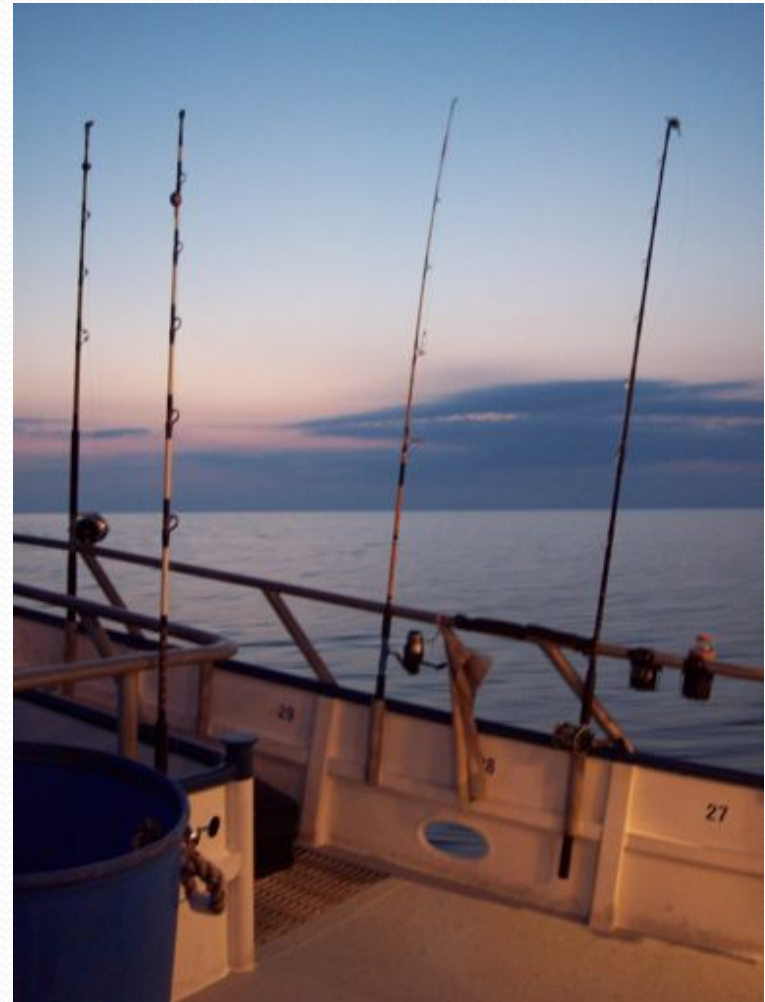
Reviews

- NRC and MRIP reviews recommended essential elements for for-hire logbook reporting programs:
 - Mandatory, weekly reporting
 - Electronic
 - Strict verification and enforcement components
 - Quick ID and follow-up of non-response
 - Data made available in timely manner
 - Methods to adjust self-reported data as necessary

Since the Reviews

MRIP For-Hire Workgroup Projects:

- Improve existing logbook programs
 - Hawaii, South Atlantic
- Test validation methods
 - Gulf of Mexico



2009 MRIP Workshop*

- State (TX, LA, MS, AL, FL)
- Federal (SEFSC, SERO, S&T)
- Regional (GMFMC, GSMFC)
- Industry (Federal, State, Guides)
- Enforcement (NMFS)
- NGO's (EDF, OC)
- Technology (Bluefin, Olfish, Sea Grant)
- Economic (LSU, NMFS)
- Statistical Consultants (LSU, RTI)

*Summary report provided with reference documents for this Forum

Workshop

- Major recommendations:
 - Estimates should be available on monthly or lesser time interval
 - Reporting frequency weekly
 - Self-reported data should be validated and “validatable”
 - Validation data must be available in timely manner for use in monthly estimates
 - Mandatory and facilitate enforcement
 - Pilot should be Gulf-wide in scope
- Keep It Simple!
 - Logbook reporting system should be kept to a minimum amount of data elements.

Workshop

- Validation of self-reported logbook data serves several important purposes:
 - Measures non-compliance (non-reporting, incomplete reporting, false reporting) and facilitates enforcement so that non-compliance can be minimized,
 - Allows for comparisons between self-reported and observed catch and effort to measure under/over reporting so that it may be accounted for,
 - May also serve the added benefit of collecting additional data that are not recorded on the logbook trip report (such as biological characteristics of the catch).

Workshop

- Identified two types of data elements:
 1. Data that are easily recorded by vessel operators on a logbook trip report, are “validatable”, or necessary at the census-level.
 - Effort, harvest, discards
 - Area fished
 2. Detailed data more appropriately collected by some other means, not necessary or practical at the census-level
 - Biological composition of harvest
 - Detailed information on discards
 - Angler-level and site-level data
 - Economic data



Workshop

- Validation methods for catch, recommended combination of:
 - Dockside
 - Validate self-reported harvest and effort data
 - Collect biological data from harvest
 - Validate recall for discards
 - At-Sea
 - Validate self-reported discard data
 - Biological data on discards
 - Detailed angler-level and site-level discard data

Workshop

Validation methods for Effort:

- Preferred hail-out method, VMS requirement not recommended
- NMFS can require weekly reporting for permit renewal, currently a moratorium on new permits

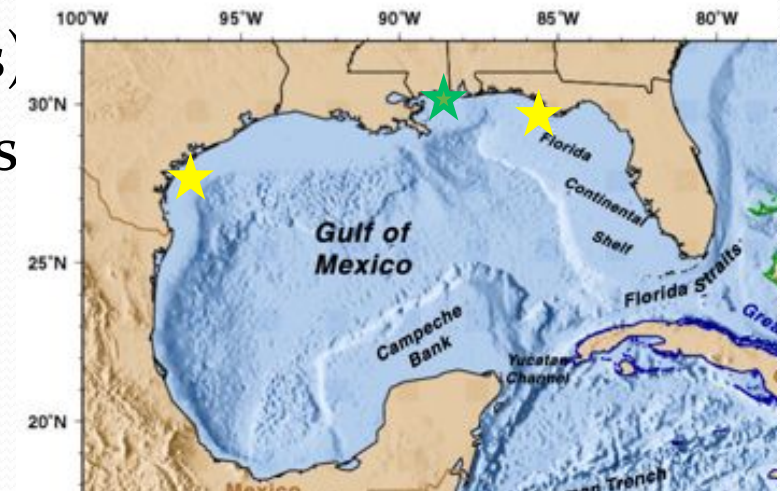
From CFR Title 50 §622.5:

Fishing Week = Monday through Sunday
Reporting Deadline = following Sunday

- States, most require legislative approval

2010 MRIP Pilot

- Federally Permitted Charter Vessels (Reef/Pelagic)
 - excludes headboats already reporting monthly
- Two geographic areas:
 - Corpus Christi, Texas (60 vessels)
 - Panhandle of Florida (357 vessels)
- Mandatory weekly reporting
 - 3 public meetings
 - Certified notification
 - Grace period for start-up
- Dockside and at-sea validation components

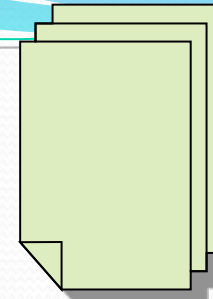


Logbook Reporting System

- Secure web reporting tool, registration required
 - ftp file upload option, similar to commercial trip reporting
 - Paper logsheets available, case-by-case
- Inactivity reported weekly or at start of month
- Weekly tracking of missing reports and late notification
- NMFS receives monthly non-compliance list
 - weekly updates as vessels clear



Secure Internet Site
- ftp file upload option



Paper
Logsheets

Weekly



Weekly tracking of
Missing Reports

Permit Holds



Paper logs entered electronically

Weekly reminders for e-reporters

Weekly



Weekly e-mail
notifications for
missing reports

Monthly phone
contact for
missing weeks
(paper/electronic)

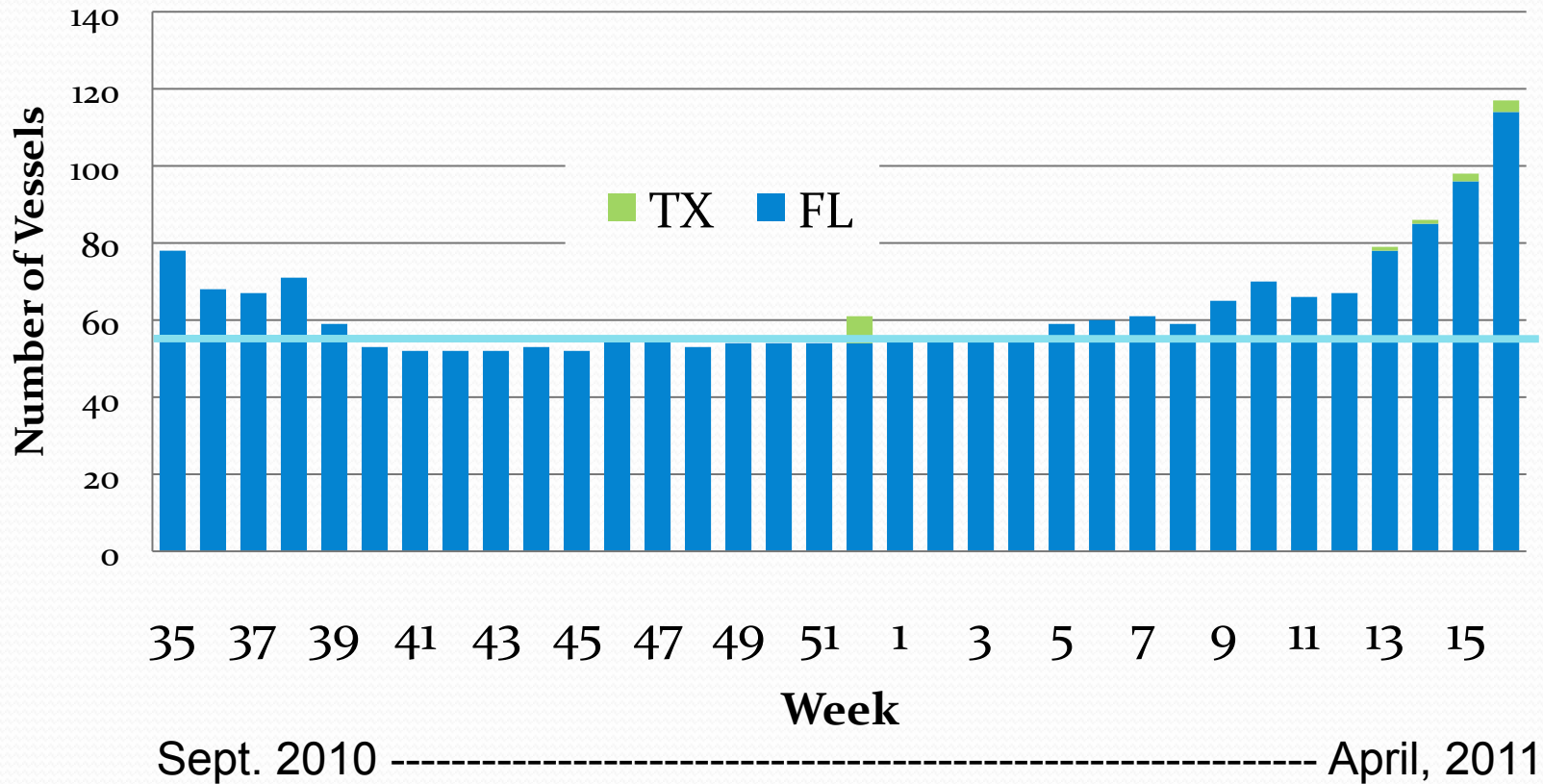


Non-Compliance List

Progress through April, 2011

- In Florida, 354 Selected Vessels:
 - 242 reporting electronically
 - 66 reporting with paper logsheets
 - 46 non-cooperative, on permit hold list
 - 30 late reports (>1 month), on permit hold list
- In Texas, 62 Selected Vessels:
 - 100% reporting electronically
 - 100% cooperative
 - 0 late reports (>1 month), on permit hold list

Missing Reports by Week (9/10 - 4/11) As of May 1, 2011



Reporting Timeliness

- Florida

Month	Inactive >1week	Inactive >1month	Active >1 week	Active >1month	Vessels Cleared
Sept.	670	298	191	40	
Oct.	358	190	311	68	
Nov.	368	138	117	30	
Dec.	365	110	8	4	7
Jan.	231	64	2	0	11
Feb.	183	28	7	0	5
Mar.	170	2	118	2	

Reporting Timeliness

- Texas

Month	Inactive >1week	Inactive >1month	Active >1 week	Active >1month
Sept.	166	34	36	0
Oct.	42	15	7	0
Nov.	64	18	7	0
Dec.	64	23	3	0
Jan.	57	18	0	0
Feb.	37	10	0	0
Mar.	38	0	5	0

Validation Methods

1. Effort Validation

- List of vessel sites
 - 6 validation regions in FL
 - randomly select 2 regions per week and validate every vessel at every site in selected region.
 - 1 validation region in TX



Validation Methods (cont.)

2. Dockside Validation of Catch

- Random site selection
- Sample all vessels returning to selected site
- Interview vessel operators
 - Harvest, discards, trip details
 - Compare with logbooks
- Biological data
- Sample size: 200 FL, 100 TX



Validation Methods (cont.)

3. At-Sea Validation of Catch

- Voluntary participation, random vessel selection
 - 89 vessels participating in FL, ~30 in Texas
- Observe harvest and discards
- Additional discard data:
 - Size, species
 - Fishing location
 - Handling, disposition
- Sample size:
 - 80 trips in FL, 50 TX



Dockside Validations

	FLORIDA		TEXAS	
	Assignments	Vessels	Assignments	Vessels
Sep	24	55	10	6
Oct	26	108	15	9
Nov	25	36	12	2
Dec	16	1	8	2
Jan	20	1	8	0
Feb	20	7	9	1
Mar	18	16	10	3
Apr	20	70	8	2

At-Sea Validations

- Sampled Trips

	FL	TX
Sep	4	10
Oct	15	4
Nov	13	0
Dec	0	0
Jan	1	0
Feb	4	0
Mar	6	2
Apr	7	1

Evaluation

- Work with Statistician to:
 - Start with raw logbook data
 - Adjust effort/catch for missing/late reports
 - Compare self-reported data with validation data.
 - Evaluate validation coverage
 - Assess magnitude of under/over reporting
 - If statistically valid, develop methods to adjust raw harvest and/or discard numbers
- Survey participants
- Evaluate feasibility and make recommendations

Helping Hands

“On-the-dock” support from vessel owners and operators

MRIP For-Hire Workgroup, Gulf of Mexico Project Team

Dave Donaldson and Gregg Bray, GSMFC

Beverly Sauls, FL FWC

Page Campbell, TPWD

Andy Strelcheck, NMFS SERO

Ken Brennan, NMFS SEFSC

Gulf Logbook

Claude and Andrew Peterson

BluefinData.com

State Representatives

Stephanie Freed and Bridget Cermak, FL

Katie Doyle and Alice Best, TX

NMFS Support

Roy Crabtree, Bonnie Ponwith, Pres Pate, Mike Judge, Carolyn Sramek,
Peter Hood, Forbes Darby, Gordon Colvin, Rob Andrews, Shep Grimes

